

Daventry

28 High Street, Daventry, NN11 4HU

T: 01327 879869

Offices also located in Northampton

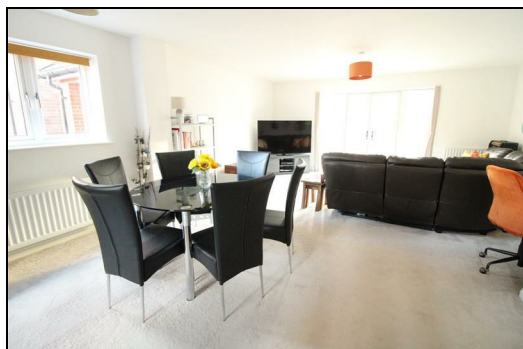
stonhills.co.uk



**4 Buildwas Close, Daventry**

**NN11 2PF**

**£310,000**



## Ground Floor

Enter into a welcoming entrance hall with door to the open plan living area and a high specification ground floor cloakroom with Amtico flooring. The rest of the ground floor is open plan with a comprehensively fitted kitchen area with integrated appliances including double oven, induction hob, stainless steel hood, dishwasher and fridge/freezer. The remaining area is light, airy and spacious with dual aspect double doors to the CONSERVATORY and stairs to the first floor landing.

## First Floor

A central landing has a large storage cupboard, airing cupboard, access to the loft space and doors to all rooms. The master bedroom has fitted wardrobes, a feature full length picture style window and a door to a high specification en-suite shower room with double shower cubicle, mains fed shower system. There are two further double bedrooms and another high specification bathroom with mains fed shower system.

## Outside

The front has neat flowers and paved access to the driveway (with charging point) and rear garden gate. The rear garden is fully enclosed by timber panel fencing with an adjacent paved patio and lawn.

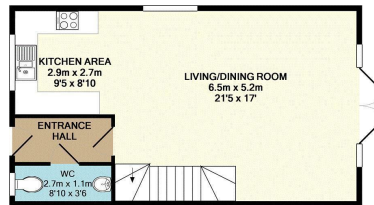
## Parking

The property has a driveway leading to a single garage with electric up and over door, power points and lighting.

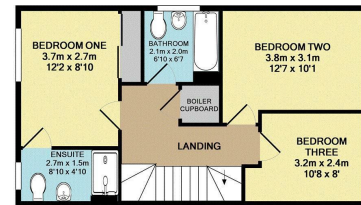
## Location

Monksmoor is located to the north-eastern edge of Daventry and sits between the Grand Union Canal and Daventry Country Park. The development boasts a brand new primary school that opened for reception year students in Sept 2018 and in due course will offer a local centre with shops. Daventry itself boasts Waitrose, Tesco and Aldi supermarkets, along with various other high street shops and stores. In addition there is a leisure centre including swimming pool, gym, keep fit classes and various other activities. Daventry town is conveniently situated for many major road networks to include the A45, A5, A14, M1, M6 and M40 as well as train services from Rugby, Long Buckby and Northampton with services to London Euston.

PLEASE NOTE: CURRENT COUNCIL TAX BAND IS C.



GROUND FLOOR  
APPROX. FLOOR  
AREA 47.8 SQ.M.  
(514 SQ.F.T.)

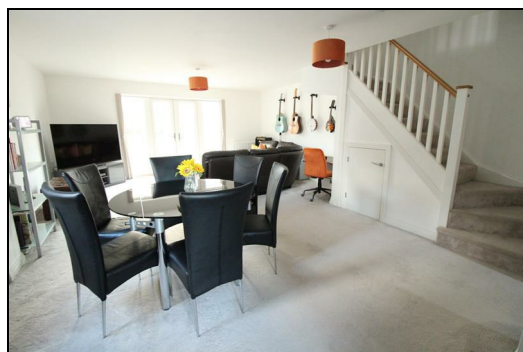


1ST FLOOR  
APPROX. FLOOR  
AREA 47.4 SQ.M.  
(510 SQ.F.T.)

TOTAL APPROX. FLOOR AREA 95.1 SQ.M. (1024 SQ.F.T.)

Energy Efficiency Rating	Current	Potential
<i>Very energy efficient - lower running costs</i>		
(92 plus) <b>A</b>		
(81-91) <b>B</b>		
(69-80) <b>C</b>		
(55-68) <b>D</b>		
(39-54) <b>E</b>		
(21-38) <b>F</b>		
(1-20) <b>G</b>		
<i>Not energy efficient - higher running costs</i>		
<b>England &amp; Wales</b>	EU Directive 2002/91/EC	

Environmental Impact (CO <sub>2</sub> ) Rating	Current	Potential
<i>Very environmentally friendly - lower CO2 emissions</i>		
(92 plus) <b>A</b>		
(81-91) <b>B</b>		
(69-80) <b>C</b>		
(55-68) <b>D</b>		
(39-54) <b>E</b>		
(21-38) <b>F</b>		
(1-20) <b>G</b>		
<i>Not environmentally friendly - higher CO2 emissions</i>		
<b>England &amp; Wales</b>	EU Directive 2002/91/EC	



**Zoopla.co.uk**

THE NATIONAL ASSOCIATION OF ESTATE AGENTS  
**NAEA**  
ESTATE AGENTS

**Ombudsman**  
www.oea.co.uk

**rightmove.co.uk**  
The UK's number one property website

Appliances: Stonhills have not tested any equipment, fittings for services and so cannot verify they are in working order. The buyer is advised to obtain verification from their Solicitor or Surveyor. Measurements are for guidance only and are approximate. The buyer is therefore advised to check measurements if they are required for any other purpose e.g. fitted carpets, furniture, etc.